



PARK VIEW Dog Grooming

www.parkviewgrooming.co.uk

01925 721 082 or 07594 672 003

Price List

Dog Breed	Recommended Grooming Intervals	Full Groom Price From.....	Bath Only Price From.....	Approximate Time Required for Groom
Airedale Terrier	6 – 10 weeks	£40	£30	2 hrs - 2 ½ hrs
Alaskan Malamute	6 – 10 weeks	£40	N/A	2 ½ hrs – 3 hrs
American Cocker	4 – 6 weeks	£40	£30	2 hrs - 2 ½ hrs
American Bulldog	8 – 12 weeks	£30	N/A	1 hr – 1 ½ hrs
Basset Hound	8 – 10 weeks	£28	N/A	1 ½ hrs - 2 hrs
Beagle	6 – 8 weeks	£25	N/A	1 hr - 1 ½ hrs
Bearded Collie	6 – 8 weeks	£40	£30	2 hrs - 2 ½ hrs
Bernese Mountain Dog	6 – 10 weeks	£60	N/A	3 hrs - 3 ½ hrs
Bichon Frise	4 – 8 weeks	£30	£25	1 ½ hrs - 2 ½ hrs
Bloodhound	8 – 12 weeks	£35	N/A	2 hrs
Border Collie – Short Haired	8 – 10 weeks	£35	£30	1 ½ hrs – 2 hrs
Border Collie – Long Haired	8 – 10 weeks	£40	£35	2 hrs – 2 ½ hrs
Border Terrier	8 – 10 weeks	£30	£25	1 ½ hrs – 2 hrs
Boxer	8 – 12 weeks	£30	N/A	1 ½ hrs
Briard	8 – 12 weeks	£60	N/A	3 ½ hrs
British Bull Dog	8 – 12 weeks	£25	N/A	1 hr
Old English Bulldog	8 – 12 weeks	£30	N/A	1 hr – 1 ½ hrs
Cavachon	8 – 12 weeks	£30	25	1 ½ hrs – 2 ½ hrs
Cavalier King Charles Spaniel	6 – 8 weeks	£30	£25	1 ½ hrs – 2 hrs
Cavapoo	8 – 12 weeks	£32	£27	2 hrs – 2 ½ hrs
Cairn Terrier	4 – 8 weeks	£30	£25	2 hrs – 2 ½ hrs
Chihuahua Short Coat	6 – 8 weeks	£25	N/A	1 hr – 1 ½ hrs
Chihuahua Long Coat	6 – 8 weeks	£30	N/A	1 ½ hrs – 2 hrs
Chow Chow	4 – 6 weeks	£50	N/A	2 ½ hrs – 3 ½ hrs
Cocker Spaniel – Working Cut	8 – 12 weeks	£30	£25	1 ½ hrs – 2 hrs
Cocker Spaniel – Show Cut	4 - 8 weeks	£40	£30	From 2 hrs



Dog Breed	Recommended Grooming Intervals	Full Groom Price From.....	Bath Only Price From.....	Approximate Time Required for Groom
Cockapoo	6 – 8 weeks	£35	£30	2 hrs – 2 ½ hrs
Collie	8 – 10 weeks	£35	£30	1 ½ hrs – 2 hrs
Corgi	6 – 8 weeks	£25	£20	1 hr – 1 ½ hrs
Dachshund – Short Haired	8 – 10 weeks	£25	£20	1 hr – 1 ½ hrs
Dachshund – Long Haired	8 – 10 weeks	£28	£22	1 ½ hrs – 2 hrs
Dachshund – Wired Haired	8 – 10 weeks	£28	£22	1 ½ hrs – 2 hrs
Dalmatian	8 – 12 weeks	£35	N/A	1 ½ hrs – 2 hrs
Doberman	8 – 12 weeks	£35	N/A	1 ½ hrs – 2 hrs
Dogue De Bordeaux	8 – 10 weeks	£40	N/A	2 hrs – 2 ½ hrs
Elkhound	6 – 10 weeks	£50	N/A	2 ½ hrs – 3 hrs
Fox Terrier	6 – 10 weeks	£30	£25	1 ½ hrs – 2 hrs
French Bull Dog	8 – 12 weeks	£25	N/A	1 hr
German Shepherd Short	8 – 12 weeks	£35	N/A	1 ½ hrs – 2hrs
German Shepherd Long	6 – 10 weeks	£40	N/A	2hrs – 2 ½ hrs
Goldendoodle	6 – 10 weeks	£55	£45	2 ½ hrs – 3 hrs
Golden Retriever	6 – 8 weeks	£35	N/A	2 hrs – 2 ½ hrs
Grand Bassett Griffon Vendeen	6 – 8 weeks	£40	£30	2 hrs – 2 ½ hrs
Great Dane	12 – 16 weeks	£45	N/A	2 hrs – 2 ½ hrs
Greyhound	8 – 12 weeks	£30	N/A	1 ½ hrs – 2 hrs
Havanese	4 – 6 weeks	£35	£30	2hrs – 2 ½ hrs
Husky	6 – 10 weeks	£40	N/A	2hrs – 2 ½ hrs
Italian Spinone	6 – 10 weeks	£45	£37	2 ½ hrs – 3hrs
Jack Russell	6 – 12 weeks	£25	£20	1 hr – 1 ½ hrs
Kerry Blue Terrier	6 – 8 weeks	£45	N/A	2 ½ hrs – 3 hrs
Labradoodle	6 – 10 weeks	£45	£35	2 ½ hrs - 3 hrs
Labrador	8 – 12 weeks	£30	N/A	1 ½ hrs – 2 hrs
Lakeland Terrier	6 – 10 weeks	£35	£30	1 ½ hrs – 2 hrs



PARK VIEW Dog Grooming

www.parkviewgrooming.co.uk

01925 721 082 or 07594 672 003

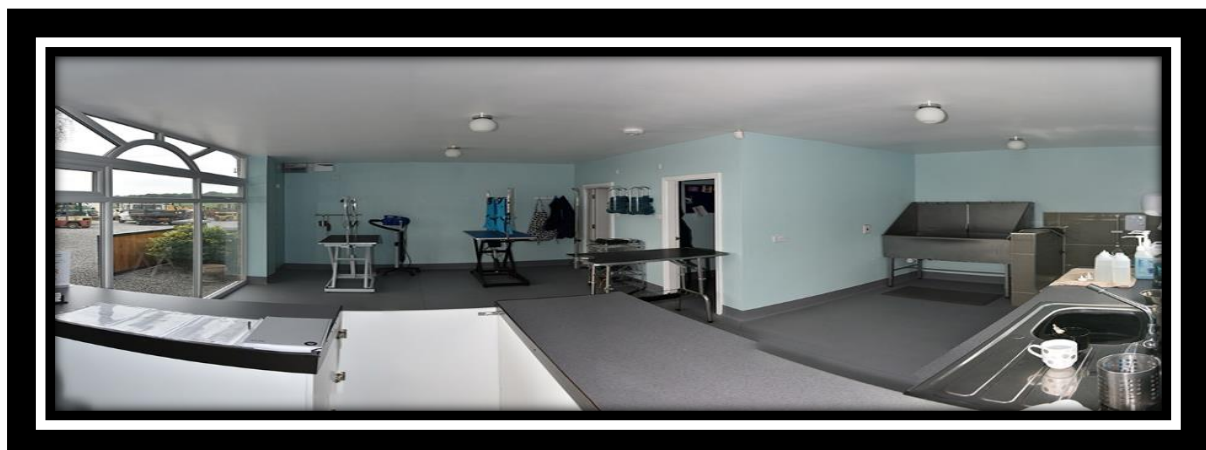
Dog Breed	Recommended Grooming Intervals	Full Groom Price From.....	Bath Only Price From.....	Approximate Time Required for Groom
Leonberger	6 – 10 weeks	£60	N/A	3 hrs
Lhasa Apso – Clip Off	6 – 10 weeks	£30	£25	1 ½ hrs – 2 hrs
Lhasa Apso – Show Cut	4 – 6 weeks	£40	N/A	2 hrs -2 ½ hrs
Lurcher	8 – 12 weeks	£30	N/A	1 ½ hrs – 2 hrs
Maltese Terrier	6 – 10 weeks	£30	£25	1 ½ hrs – 2 hrs
Mastiff	8 – 12 weeks	£40	N/A	2 hrs plus
Newfoundland	6 – 10 weeks	£60	N/A	3 hrs plus
Norfolk Terrier	8 – 12 weeks	£30	£25	1 ½ hrs – 2 hrs
Old English Sheepdog	6 – 8 weeks	£60	N/A	3 hrs plus
Papillon	6 – 8 weeks	£30	£25	2 hrs – 2 ½ hrs
Patterdale Terrier	6 – 12 weeks	£30	£25	2 hrs – 2 ½ hrs
Pekingese	4 – 8 weeks	£30	£25	2 hrs – 2 ½ hrs
Pointer	10 – 12 weeks	£30	N/A	2 hrs – 2 ½ hrs
Pomeranian	4 – 6 weeks	£35	N/A	2 hrs – 2 ½ hrs
Poodle Toy	4 – 6 weeks	£40	N/A	2 hrs – 2 ½ hrs
Poodle Miniature	4 – 6 weeks	£45	N/A	2 hrs – 2 ½ hrs
Poodle Standard	4 – 6 weeks	£55	N/A	3 hrs plus
Portuguese Water Dog	4 – 6 weeks	£40	N/A	2 hrs – 2 ½ hrs
Pug	4 – 6 weeks	£25	N/A	1 hr – 1 ½ hrs
Rottweiler	8 – 10 weeks	£40	N/A	2 hrs – 2 ½ hrs
Rough Collie	8 – 10 weeks	£45	N/A	2 hrs – 2 ½ hrs
Samoyed	8 – 10 weeks	£50	N/A	3 hrs
Schnauzer – Miniature	6 -10 weeks	£35	£27	1 ½ hrs – 2 ½ hrs
Schnauzer - Standard	6 -10 weeks	£40	£32	2 hrs – 3 hrs
Scottish Terrier	6 – 8 weeks	£35	£25	2 hrs – 2 ½ hrs
Shar-Pei	8 – 10 weeks	£30	N/A	2 hrs
Shetland Sheep Dog	4 – 6 weeks	£35	N/A	2 hrs – 2 ½ hrs

Dog Breed	Recommended Grooming Intervals	Full Groom Price From.....	Bath Only Price From.....	Approximate Time Required for Groom
Shih Tzu – Clip Off	6 – 10 weeks	£30	£25	1 ½ hrs – 2 hrs
Shih Tzu – Show Cut	4 – 6 weeks	£40	N/A	2 hrs - 2 ½ hrs
Springer Spaniel	6 – 8 weeks	£32	£27	2 hrs – 2 ½ hrs
St. Bernard	8 weeks	£70	N/A	3 hrs plus
Staffordshire Bull Terrier	10 – 12 weeks	£25	N/A	1 hr – 1 ½ hrs
Tibetan Terrier	6 – 8 weeks	£35	£30	2 hrs – 2 ½ hrs
West Highland Terrier	6 – 8 weeks	£32	£27	2 hrs – 2 ½ hrs
Wheaten Terrier	6 – 8 weeks	£35	£30	2 hrs – 2 ½ hrs
Whippet	8 – 10 weeks	£25	N/A	1 hr – 1 ½ hrs
Yorkshire Terrier	6 – 8 weeks	£30	£25	1 ½ hrs – 2 ½ hrs
Cross Breeds	Varies	Price will be based on the individual dog, however will be approximately the higher charged price breed.		
Puppy Intro	From 12-26 weeks	Prices from £15 (Puppies can be brought as soon as they have had their vaccinations).		

Please note, the above prices are guide prices and are based on good coat condition and your dog being regularly groomed within reasonable timescales. Not following a regular grooming schedule or poor coat condition may lead to increased charges.

We need to consider various factors as they determine the levels of work required. We do not want to overcharge you neither do we wish to underestimate our work. Please be as precise as possible when describing your dog to us over the phone.

The price of the grooming will be agreed with you before we start the groom.



Additional services:

De-matting (prices from £5)

This is an extra charge that will be discussed with you on arrival, the cost will be dependant on the severity of the matts along with the wellbeing of your dog being our main priority, which may mean a de-matting service not being possible and a shorter than normal cut required instead.

The extra charge is due to increased wear and tear on the equipment, added to the additional time required

Shampoo Treatments

Whitening Shampoo - £1

Specially designed for white and light-coloured coat types; i.e. Maltese, Dalmatians etc. Excellent for removing dirt and grease stains, leaving a high gloss, bright finish removing any odours.

Colour Enriching Shampoo - £1

Both shampoos enhance not only colour, but also leave the coat with a natural gloss and shining with sheer vitality and pure health.

The "Black" shampoo is specifically designed for use on black coats, whilst the "Copper" shampoo is designed for brown, red and copper coats, such as Irish Setters, Labradors etc.

Oatmeal Shampoo - £1

Based on natural ingredients and containing no harmful detergents or cleansers. The perfectly balanced formula includes Coconut Extract and Sweet Almond Oil and achieves exceptional results whilst gently calming, moisturising both skin and coat at the same time. It is ideal for pets with a more delicate skin nature, puppies or young pets.

Spa Package - £3

Consists of your choice of a Luxury Shampoo together with the Blueberry Facial Treatment.

This treatment not only provides your pooch with a luxury shampoo, but also a calming, aromatherapeutic experience for your pooch. This lightly foaming facial cleanser soothes and balances the skin. The refreshing blend of vanilla and blueberry effectively removes dirt and tear stains

Pawdicure - £10

Includes a Paw Trim, Nail Trim and our Pad Treatment

Nose/Pad Treatments - £2

An all-natural balm moisturiser, that heals and prevents dryness and cracking

Drop-In Services

Eye/Face Tidy from £5

Ear Plucking £5

Nail Clipping £5

Ear Cleanse £5

Hygiene Trim £5